



# Welcome to the ECCOTA Summer Theater Camp Auditions! Thursday, May 11, 6-7:30pm

St. Marys Area High School Band Room  
Students entering Grades 3-12 and 2023 graduates  
Under the direction of Mr. Adam Brooks

All potential cast members will sing by themselves in front of an audition panel. You will audition and the panel will choose the cast. We will ask you what roles you may be interested in performing so be ready to tell us what you want to do. Once you have auditioned, you may leave. We will post the cast list ASAP.

**AUDITIONS THURSDAY, MAY 11, 2023, 6:00-7:30pm**

**FULL CAST READ-THROUGH JUNE TBA**

**SUMMER THEATER CAMP BEGINS on MONDAY, JUNE 19, 9:00am-4:00pm**

**Singing Requirements - ALL:** Perform “Let the Sunshine In” (2 pages) as an “Arendelle Townsperson”. This is an ensemble song so everyone will have to learn it anyway. This would also be a great time to show off any special talent you have (dancing, balancing, juggling, gymnastics, etc.)

[ALL PRACTICE - “Sunshine” \(Click\)](#)

[ALL AUDITION Instrumental - “Sunshine” \(Click\)](#)

**Leading BOY ROLES:** If you would like to play one of the leading BOY characters (King Agnarr, Kristoff, Hans, Oaken, various magical people), perform “Reindeer(s) Are Better Than People” as Kristoff. Also sing the parts written for Sven, the reindeer. Make it fun. Be extra about it.

[BOY PRACTICE - “Reindeer” \(Click\)](#)

[BOY AUDITION Instrumental - “Reindeer” \(Click\)](#)

**Leading GIRL ROLES:** If you would like to play one of the leading GIRL characters (Queen Iduna, any Elsa, any Anna), perform the “Let it Go” selection as Elsa. Please Note that the song starts towards the end, at the key change. Make sure to look at the music.

[GIRL PRACTICE - “Let it Go” \(Click\)](#)

[GIRL AUDITION Instrumental - “Let it Go” \(Click\)](#)

**OTHER LEADING ROLES:** Olaf, Pabbie and Bulda (from the Hidden Folk, Kristoff’s adoptive parents, the Trolls in the movie), Sven, Weselton, Oaken, and the Bishop could all be played by boys or girls. If you would like one of these roles, you can choose either the Boy song (Reindeer) or the Girl song (Let it Go). We want to give you every chance to have a successful and good audition. We simply want to hear you sing and get a feel for your personality and acting ability. Sing what you can and do you best!

## Acting/Speaking Requirements

We may ask some students to read a passage from the musical. Nothing you need to prepare for.

## Video Audition

If you are unable to make the audition day and are interested in a leading role, solo, or speaking part, you must submit a video audition. Videos should be less than two minutes in length. Record the singing requirements (above). Send videos to [sara@eccota.com](mailto:sara@eccota.com) by **Thursday, May 11**. We are here to help you have a successful audition and a wonderful musical experience. Feel free to “show off” your singing, acting, and special talents.

***Please arrive by 6:00pm to register, rehearse, and go through the audition procedure with the director.***

Feel free to contact Adam Brooks at [abrooks@smasd.org](mailto:abrooks@smasd.org) or the ECCOTA team at [sara@eccota.com](mailto:sara@eccota.com)

## 4 Tips to a GREAT Audition

**Be Prepared** - Practice and memorize your audition materials, practice in front of a mirror, and record yourself

**Be Seen** - Use facial and body expressions, move about the room, and show emotion

**Be Heard** - Speak clearly, use a big voice, and **BREATHE!**

**Be Brave** - Remain calm and confident

# Character Breakdown

**Young Anna, Middle Anna, and Anna** are all the young Princesses of Arendelle at different ages. Filled with a tremendous amount of light, energy, and love, Anna is a hopelessly optimistic extrovert at all ages, but as she grows older, she longs for connection with others, especially her sister, Elsa. Each version of this warm and determined princess requires a strong singer with great comic timing. Because Anna and Elsa share such a close bond, consider auditioning these roles together to get a sense of the performers' chemistry. Once your actors playing Young Anna and Middle Anna are finished with these roles, consider adding them to the ensemble for the remainder of the show.

**Young Elsa, Middle Elsa, and Elsa** are all the elder Princesses of Arendelle at different ages. Next in line for the throne, Elsa has been born with magical powers that can overwhelm her when she becomes afraid and harm others if not handled with care. Fearful of hurting anyone, especially her beloved sister, Anna, Elsa becomes anxious and withdrawn as she grows older, before eventually learning to take control of, and become confident in, her powers which she masterfully uses to manipulate the Snow Chorus. **With the exception of Middle Elsa, who has only one lyric**, look for very strong singers who can portray Elsa's restrained nature. Once your actors playing Young Elsa and

**King Agnarr** - The warm-hearted ruler of Arendelle is committed to protecting both his family and the Townspeople from his eldest daughter's powers. With only one singing solo, focus on casting an actor who can play this father figure convincingly.

**Queen Iduna** - The queen possesses a sense of rightness and kindness that guides her in her protection of her two young girls. A daughter of the Northern Nomads, this queen has the ability to communicate with the Hidden Folk of the mountains and so understands Elsa's powers deeply; look for an actor who can portray this sense of compassion.

**Pabbie and Bulda** are the mystical leaders of the Hidden Folk who have a soft spot for "strays." Ever-benevolent, these parental figures want what's best for Kristoff, even if they are a bit misguided in their efforts. Look for amiable performers who will endear themselves to the audience in the crowd- pleaser, "Fixer Upper."      Gender: Any

**The Bishop** officiates the coronation and passing of the crown to Elsa. This spiritual supervisor must communicate to the Townspeople of Arendelle in a serious and formal manner.  
Gender: Any

**Kristoff** is a hardworking ice harvester. Kristoff has a sarcastic veneer and a rough-around-the-edges exterior that hides a big heart. Taken in by the Hidden Folk when he was young, he loves Pabbie and Bulda dearly, but is a bit of a loner with a reindeer for a best friend-until he meets Anna. With only a few short singing solos, focus on casting a performer who can balance a cynical sense of humor with charming banter.

**Sven** is a reindeer of few words, fiercely loyal pal to Kristoff, and loves giving the ice harvester a hard time. Look for a performer with good comic timing and terrific physical acting skills who can devise a strong movement vocabulary to bring this furry charmer to life. Consider auditioning potential Svens and Kristoffs together as the two should share a visible bond.

Gender: Any

**Hans**, The ambitious Prince of the Southern Isles and overlooked thirteenth son of a king. Hans constantly strives to find a way to make good and stand out. He boasts an exceedingly charming facade that fools everyone - including Anna and, ideally, the audience! - into believing he's Prince Charming, when really, he's just a jerk. Cast an actor who can play both sides of this two-faced prince with relish as well as confidently sing the moments of harmony in "Love Is an Open Door."

**Weselton** is A visiting duke who possesses a huge inferiority complex. A bombastic, overbearing sycophant, Weselton's sole purpose is to hobnob with influencers and royalty. Look for an actor who can portray the narrow-minded naysayer with over-the-top gusto. Gender: Any

**Olaf** is The magical snowman created by Anna and Elsa when they were young. Olaf is endearingly delighted by everything - especially the idea of summer. Goofy and sweet, Olaf should possess a childlike innocence and excellent comic timing.

Gender: Any, but the character is Male

**Oaken** - An exceedingly cheerful and convivial wandering salesperson and ardent devotee to all things cozy and comfortable. Oaken's "Hygge" is a showstopper, so cast an actor who can portray the peppy peddler's infectious warmth with flair and good humor.

Gender: Any

**Ensemble** - Includes the following roles: Townspeople, Snow Chorus, Hidden Folk, Castle Staff, Housekeeper, Butler, Handmaiden, Cook, Steward, Guards, Summer Chorus, Oaken's Family

Gender: Any

ALL/ENSEMBLE

1

66

YOUNG ANNA:  
(to YOUNG ELSA)



watch them \_\_\_ as they play. Freeze my butt!

68

YOUNG ELSA:  
(giggling) Oh, Anna.

TOWNSPEOPLE,  
KING AGNARR,  
QUEEN IDUNA:



START

Let the

(The SISTERS continue to play and move throughout the crowd of TOWNSPEOPLE.)

69



sun shine on! \_\_\_ Let our lives be \_\_\_ free. \_\_\_ Let the

71



pro-mise of our land be sure and strong. Let our

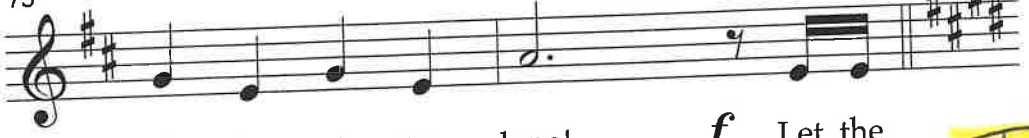
73



hearts be \_\_\_ warmed \_\_\_ by this fa-mi-ly \_\_\_

75

ALL:



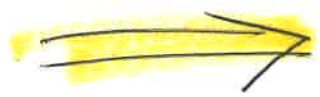
all the win-ter long! *f* Let the

TURN PAGE

77



sun shine \_\_\_ on \_\_\_ o-ver A-ren-delle. \_\_\_ Let the



2

79



crown be strong and let your love be

**ALL:**  
(Except *YOUNG ANNA*, *YOUNG ELSA*)

80



true. Bless our daugh-ters— fair,— whom we

82



love so— well!— We will— look to

84 **GROUP 1:**



you. na hi ja—na—

**GROUP 2:**



you. na hi ja—na—

**GROUP 3:**



Na na— na hei-a na na hi ja—na—

END

(#2 – LET THE SUN SHINE ON – PLAYOFF. The TOWNSPEOPLE exit.)

# LET IT GO

FOR ELSA

OPTIONAL  
GIRL  
ROLES

91

My soul is spiraling in fro-

Ah

Ah

# START

94

- zen fractals all a-round. And one thought crys-

Ah

Ah

2

97

- tal-liz - es like an i - cy blast: \_\_\_\_\_

100

(ELSA):

I'm nev - er go - ing back, the

SNOW CHORUS:

The

*(The mighty ice palace is complete.  
ELSA stands in the middle, finally free.)*

102

past is in the past! \_\_\_\_\_

past is in the past! \_\_\_\_\_



3

104

Let it go! Let it go! And I'll rise

Let it go! Let it go! And I'll rise

107

like the break of dawn. Let it go! Let it go!

like the break of dawn. Let it go! Let it go!

110

That perfect girl is gone.

That perfect girl is gone.

113 (ELSA):

Here I stand in the


4

115




light of day.

117 (ELSA):




Let the storm rage on!

SNOW CHORUS:

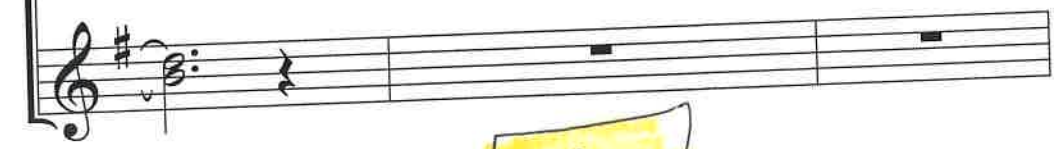


Let the storm rage on!

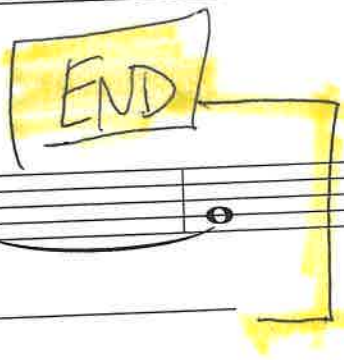
120



The cold nev-er both-ered me a - ny-way!



END



123



Oh Ah!



(ELSA and the SNOW CHORUS exit.)

SCENE 7: SNOWY MOUNTAINSIDE

(Later that night. SVEN and KRISTOFF enter.)



KRISTOFF

Sven, come on, it's not your fault that we're caught in a surprise, magical, summer blizzard, and no one will give us a room.

SVEN

(sadly)

Or a barn. Or even a fish hut.

KRISTOFF

Yeah, what do they have against reindeer?

SVEN

(scratching)

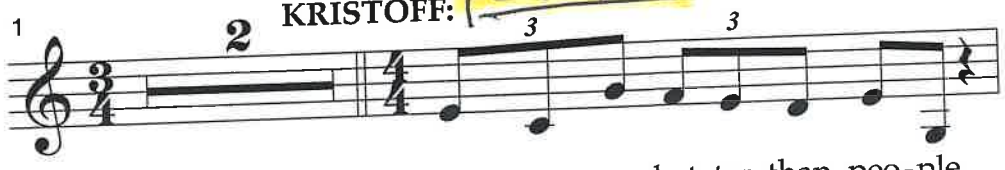
You got me.

(#16 - REINDEER(S) ARE BETTER THAN PEOPLE.)

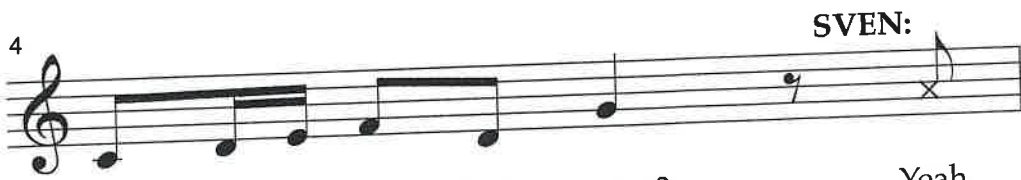
ALL BOY ROLES

Reindeer(s) Are Better Than People

START



Rein-deers are bet-ter than peo-ple.



Sven, don't you think that's true?

SVEN:

Yeah,



peo-ple de-feat you and curse you and cheat you. Ev-'ry





6 **KRISTOFF:**

one of 'em's bad, ex - cept you. Thanks, bud - dy. But

7

peo - ple smell bet - ter than rein - deers.

8 **SVEN:**

Sven, don't you think I'm right? That's

9 **KRISTOFF:**

once a - gain true, for all ex - cept you. You

10 **SVEN:**

got me. Let's call it a night. Good night.

11 **KRISTOFF, SVEN:** **SVEN:** **END**

Don't let the frost - bite bite. Rooh!

(ANNA enters, shivering.)

ANNA

Nice duet.